

We Innovate Materials

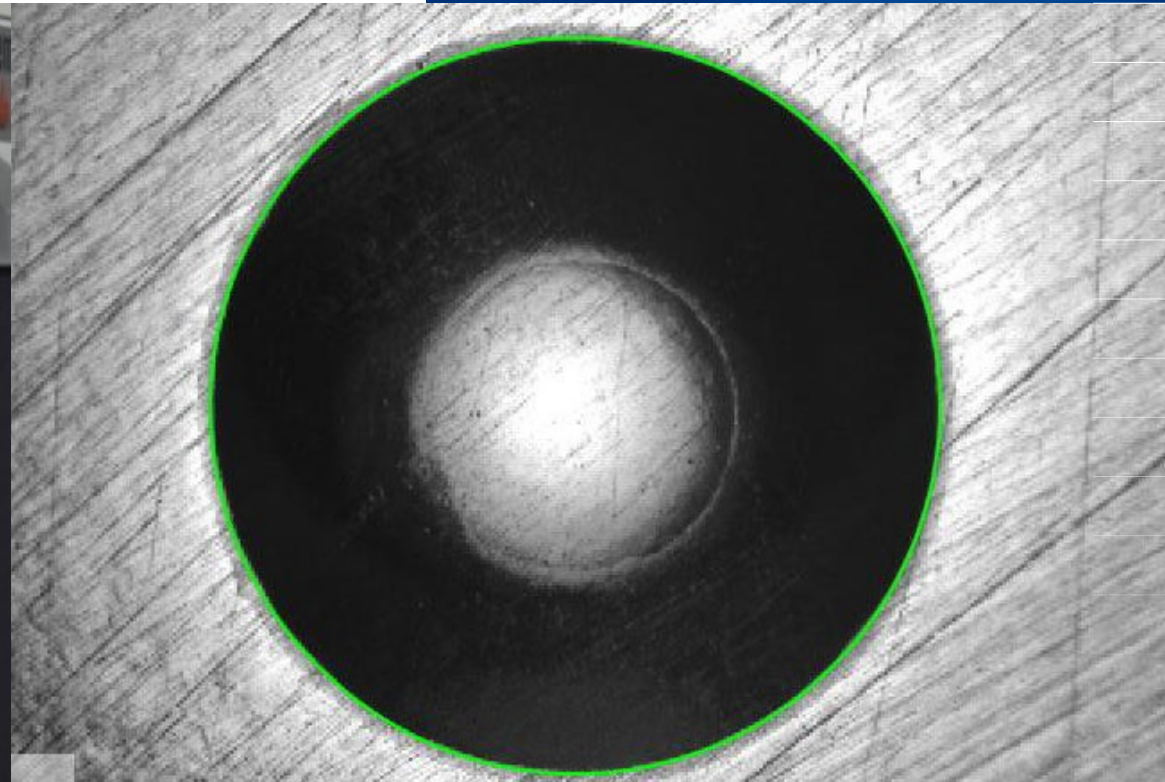
Mechanical Materials Testing

- Hardness Testing
- Static Materials Testing - Tension/Compression/Bending
- Cyclic Materials Testing - Low Cycle Fatigue (LCF)
- Cyclic Materials Testing - High Cycle Fatigue (HCF)
- Fracture Mechanics



COMPETENCE & RELIABILITY

Hardness Testing



Performance of hardness tests (Vickers HV, Brinell HB, Rockwell HRC) within the scope of accreditation according to EN ISO 17025.

Contact:



Dr. Florian Summer
T +43-676 848883 462



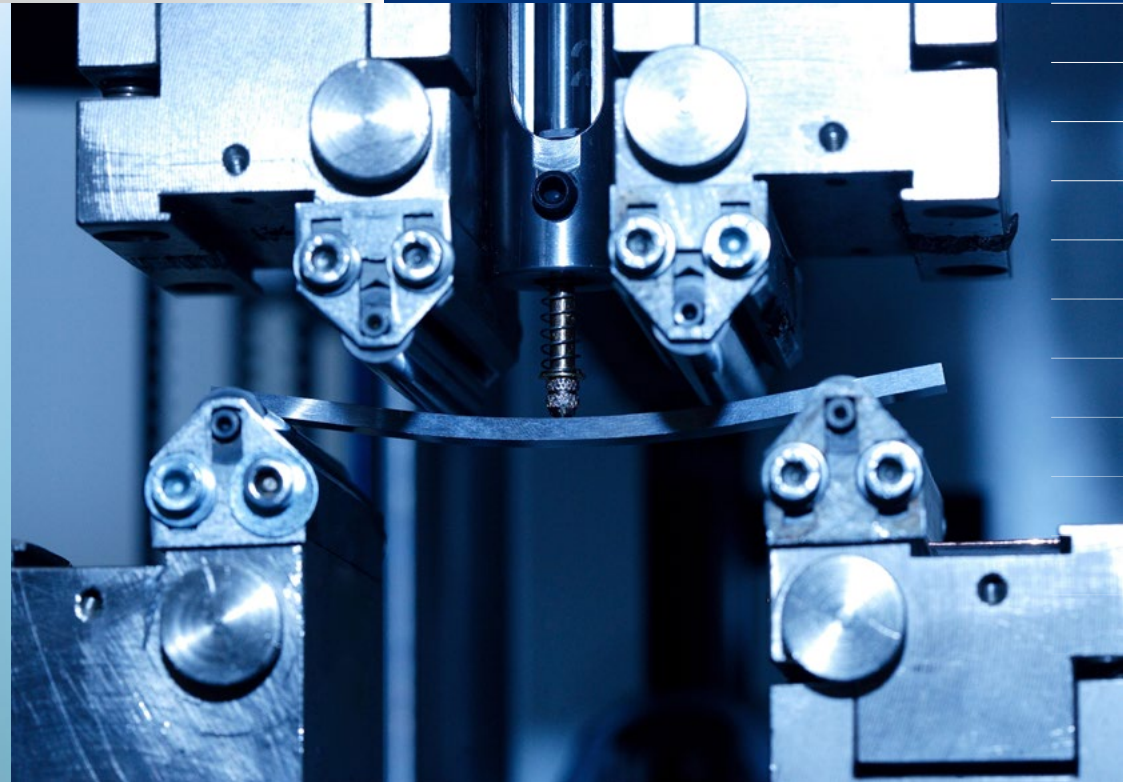
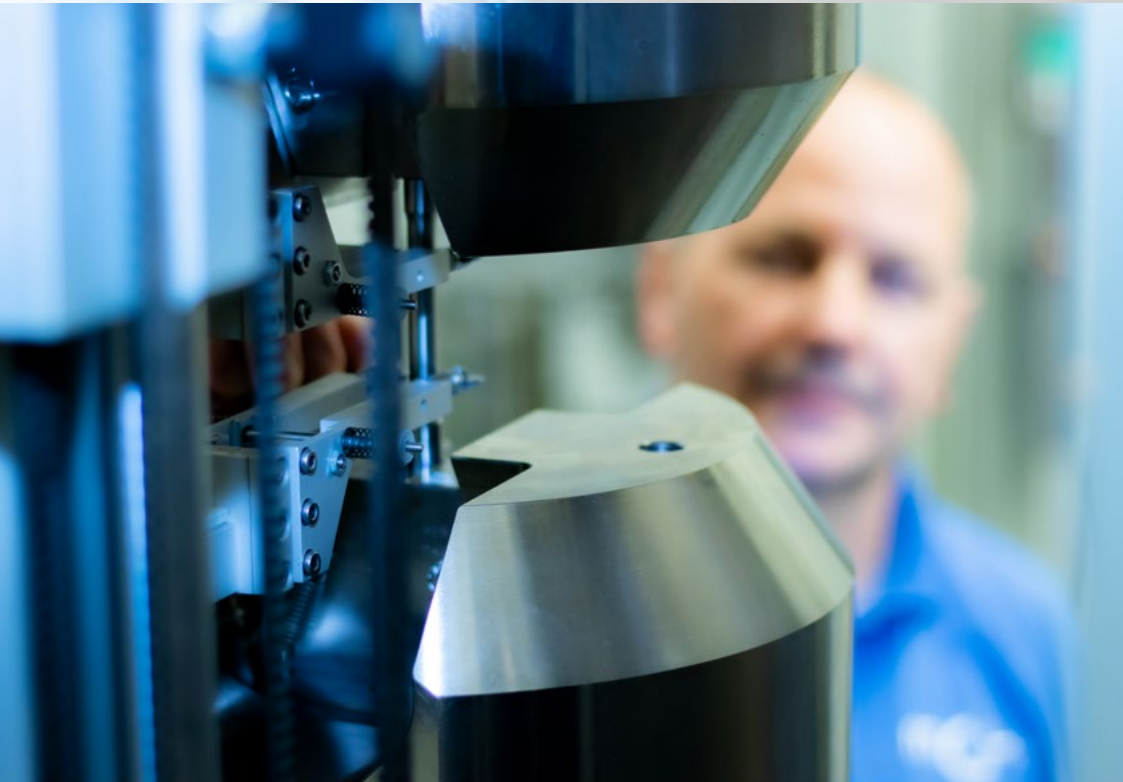
Dr. Angelika Spalek
T +43-676 848883 461

We Innovate Materials

Our Focus / Competences:

- determination of core hardness HV, HRC, HB in the accredited lab
 - EN ISO 6506-1 (HB)
 - EN ISO 6507-1 (HV)
 - EN ISO 6508-1 (HRC)
- measurement of hardness profiles
- hardness measurement of metallic and ceramic materials

Static Materials Testing - Tension/Compression/Bending



Determination of mechanical material parameters for low- to high-strength materials under tension, compression and bending

Contact:



Dr. Florian Summer
+43-676 848883 462



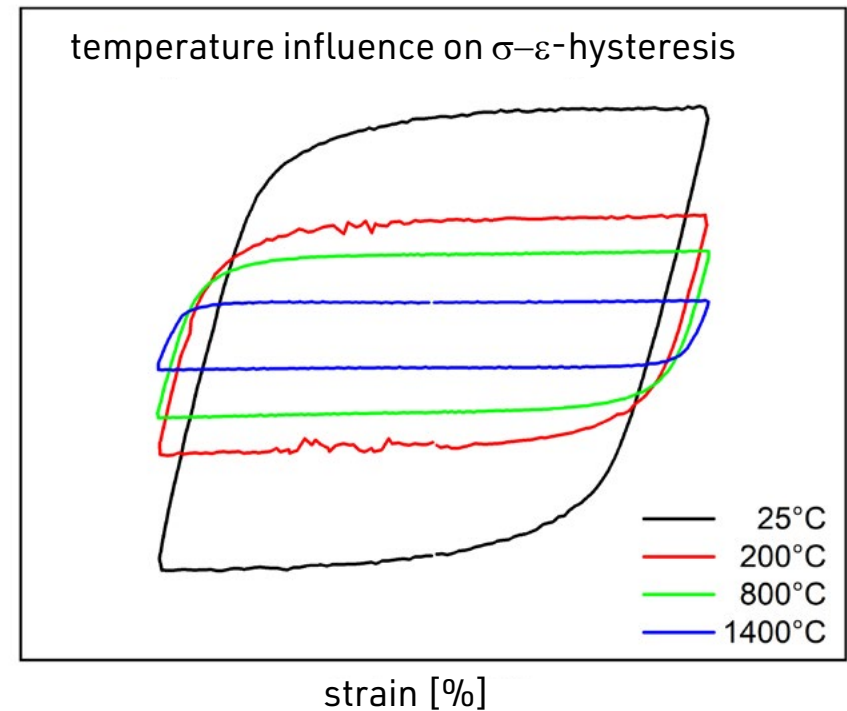
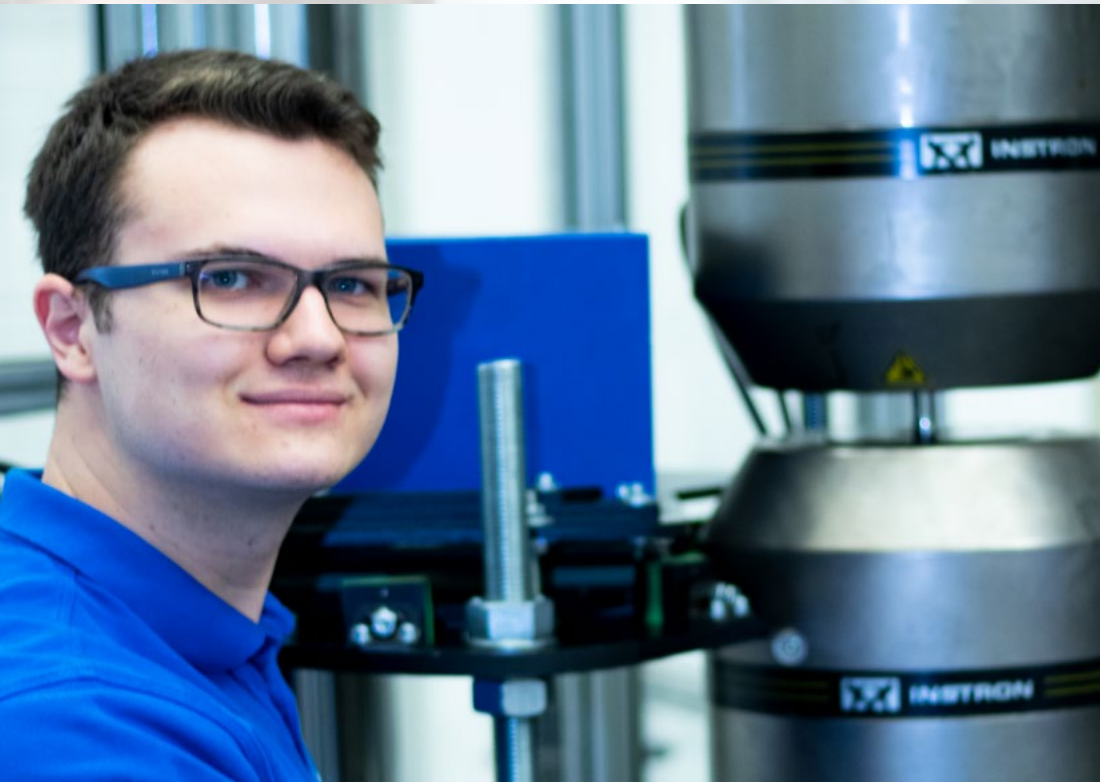
Dr. Stefan Marsoner
T +43-676 848883 400

We Innovate Materials

Our Focus / Competences:

- tensile test acc. to EN ISO and ASTM standards
- compression test acc. to ASTM E9 and DIN 50106
- 3-point and 4-point bending test
- temperature range from -150°C to 1400°C
- combination with local deformation analysis (Aramis)
- specimen fabrication and testing of various specimen geometries and dimensions

Cyclic Materials Testing - Low Cycle Fatigue (LCF)



Determination of cyclic material properties (strain creep curves, cyclic creep,...)

Contact:



Dr. Florian Summer
+43-676 848883 462



Dr. Stefan Marsoner
T +43-676 848883 400

We Innovate Materials

Our Focus / Competences:

- strain camber curves (ASTM E606, ISO 12106)
- cyclic flow curves
- cyclic creep
- tension/compression ± 250 kN from -150°C to 1400°C
- high precision laser strain measurement
- vacuum / air / inert gas
- individual load block programs
- special tests: coupling heating / cooling with mech. loading (e.g. properties of metastable phases)

Cyclic Materials Testing - High Cycle Fatigue (HCF)



Determination of cyclic material properties (Wöhler curve, fatigue strength) at room temperature and elevated temperatures
(partly within the scope of accreditation according to EN ISO 17025)

Contact:



Dr. Florian Summer
+43-676 848883 462



Dr. Stefan Marsoner
T +43-676 848883 400

Our Focus / Competences:

- High Cycle Fatigue tests (HCF) within the scope of accreditation acc. to EN ISO 17025 (DIN 50100, ASTM E466, ISO 1099)
- test frequency up to 180 Hz
- temperature: -150°C (N₂) to 900°C (air)
- statistical evaluation temporal strength / fatigue strength
- tensile-compression, torsion, bending (3PB, 4PB, 8PB)
- different atmospheres (air/protective gas/vacuum)

Fracture Mechanics



Performance of static and cyclic fracture mechanics tests
(partly within the scope of accreditation according to EN ISO 17025)

Contact:



Dr. Stefan Marsoner
T: +43-676 848883 400

Our Focus / Competences:

- static fracture mechanics:
 - K_{IC}, J_{IC}, J_{Δa}-curve, CTOD
- cyclic fracture mechanics:
 - da/dN-curves
 - threshold value determination
 - crack resistance curves
- different test arrangements
 - CT, SE(B), SE(T)
- temperatures between -150°C and 800°C

Service Offer

Hardness Testing

- Determination of core hardness and hardness profiles HV, HRC, HB

Static material testing

- Uniaxial tensile test (-150°C to 1400°C)
- Uniaxial compression test or cylinder crush test according to ASTM E9 or DIN 50106 (-150°C to 1400°C)
- 3-point and 4-point bending test
- further technological tests with special setups acc. to customer requirements

Cyclic Material Testing

- LCF Low Cycle Fatigue tests (-150°C to 1400°C) (strain camber curves, cycl. stress-strain curve, ratchetting, strep-incemental-test, ...). (ASTM E 606, ISO 12106)
- Multiaxial tension-compression-torsion test (RT up to 900°C)
- HCF high cycle fatigue tests (-150°C to 850°C) (stress creep curves statistically validated, tension-compression, bending, torsion)

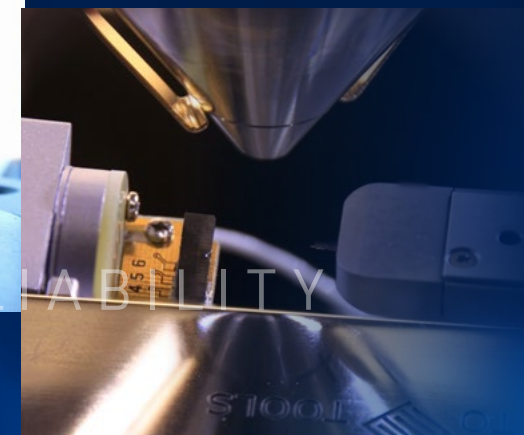
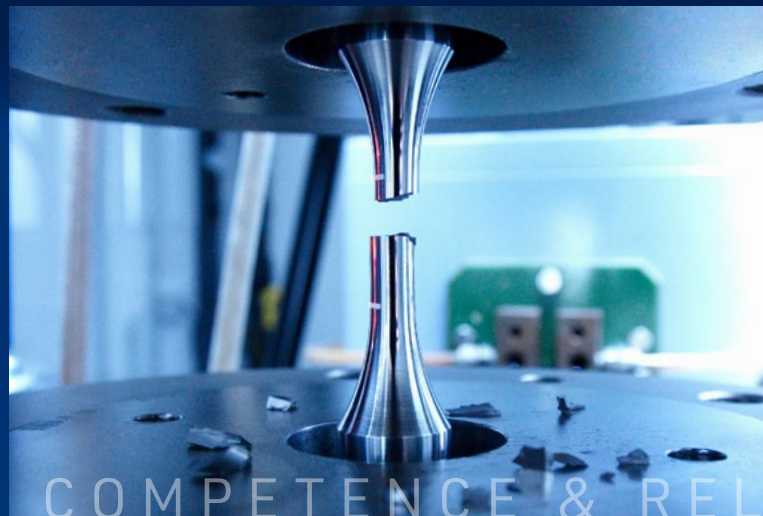
Fracture Mechanic Investigation

- Static fracture toughness test (KIC, JIC, JDa, CTOD) (-150°C to 800°C) acc. to ASTM E 1820, ISO 12135, EN ISO 15563
- cyclic fracture toughness test (da/dN curves, DKth, Paris range, ...) acc. to ASTM E 647, ISO 12108

Test procedures within the scope of accreditation

acc. to ISO IEC 17025

- determination of core hardness HV, HRC, HB acc. to EN ISO 6506-1 (HB), EN ISO 6507-1 (HV), EN ISO 6508-1 (HRC)
- tensile tests on metallic materials
 - at room temperature: EN ISO 6892-1, ASTM E8 / E8M, ASTM 370
 - at low temperatures: EN ISO 6892-3
 - at higher temperatures: EN ISO 6892-2, ASTM E21
- cyclic tests on specimens acc. to DIN50100, ASTM E466, ISO 1099
- cyclic tests on fasteners acc. to DIN969
- fracture toughness test KIC according to ASTM E 399, ISO 12135
- fatigue crack growth according to ASTM E 647, ISO 121089
- fracture toughness test JIC, Jc, J-R, acc. to ASTM E 1820 / ISO 12135



Equipment

- hardness tester Emco Test DV30G5 and QNess Q10A+
- Zwick universal testing machine Z250 (max. 250 kN)
- Zwick universal testing machine Z150 (max. 150 kN) with high temperature furnace up to 900°C
- Instron Hydropulser 8803 (max. 250 kN) mit vacuum chamber, inductive heating and high precise Laserextensometer Fiedler P50
- Instron tension-compression torsion pulsator 8854 (max. 250kN / 2000Nm) with inductive heating / compressed air cooling and high-precision Laserextensometer Fiedler P50
- Instron Hydropulser 8802 (max. 250kN) with temperature chamber (-150°C to 600°C) and high precise Laserextensometer Fiedler P50
- Schenk Hydropulser PS100 (with modernized Instron-elektronik) (max. 100kN)
- 4 x Russenberger-resonance testing machines Testronic 100 / 150 with HT-oven (up to 900°C) and temperature chamber (up to 300°C) and various setups
- 1x Russenberger resonance testing machine Mikrotron-20
- 4x DCPD-potential probes and 1x ACPD-Potential probe from Matelect and 2x high presice DCPD-measurement system (self-made) (for in-situ crack length measurement)
- variable measurement system for optical 3D displacement and deformation measurement by Aramis





Materials Center Leoben Forschung GmbH
Department Services
Roseggerstraße 12 | A-8700 Leoben
T +43-3842-45922
services@mcl.at | www.mcl.at